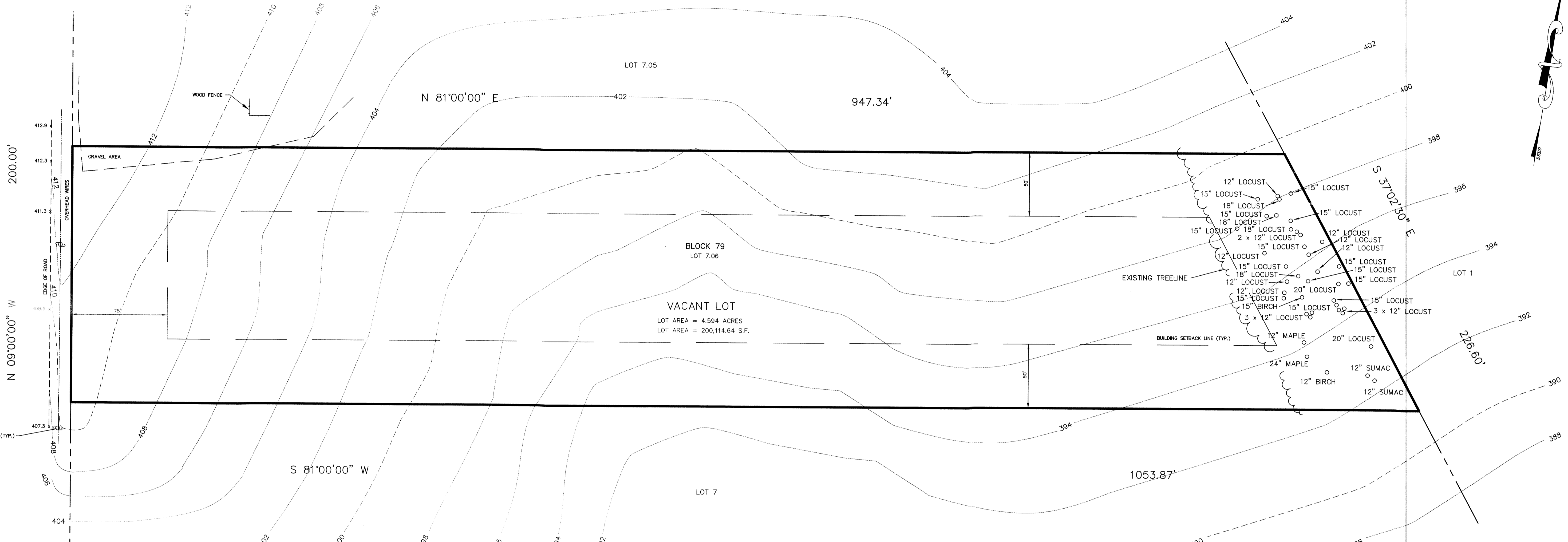
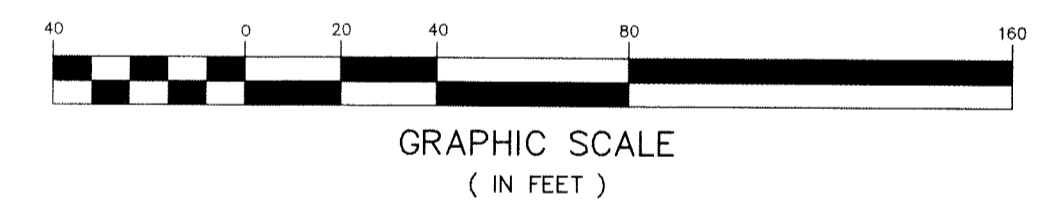
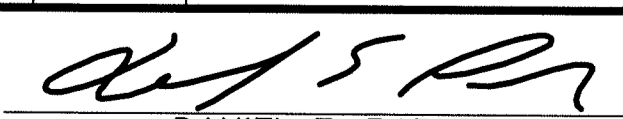


NEW JERSEY STATE HIGHWAY ROUTE 31  
(80' R.O.W.)



EXISTING CONDITIONS  
1 inch = 40 ft.




2	01/15/21	PER BOARD
1	07/20/20	PER TOWNSHIP REVIEW
NO.	DATE	REVISION
 DANIEL E. PARKER NEW JERSEY LAND SURVEYOR LIC. NO. 35866		



370 EAST MAIN STREET, SOMERVILLE, N.J. 08876  
 PHONE: (908) 725-4400 - FAX: (908) 722-4401  
 E-MAIL ADDRESS: PARKERES@AOL.COM

DRAWN BY: PJD  
 CHECKED BY: S.E.P.  
 SCALE: 1" = 40'

**SITE PLAN**  
 488 ROUTE 31 SOUTH  
 TAX MAP LOT 7.06 BLOCK 79  
 TOWNSHIP OF WASHINGTON  
 WARREN COUNTY, NEW JERSEY

  
 STEPHEN E. PARKER  
 NEW JERSEY PROFESSIONAL ENGINEER LIC. NO. 36187

DATE: 04-15-19  
 FILE: 13211  
 SHEET: 2 OF 9