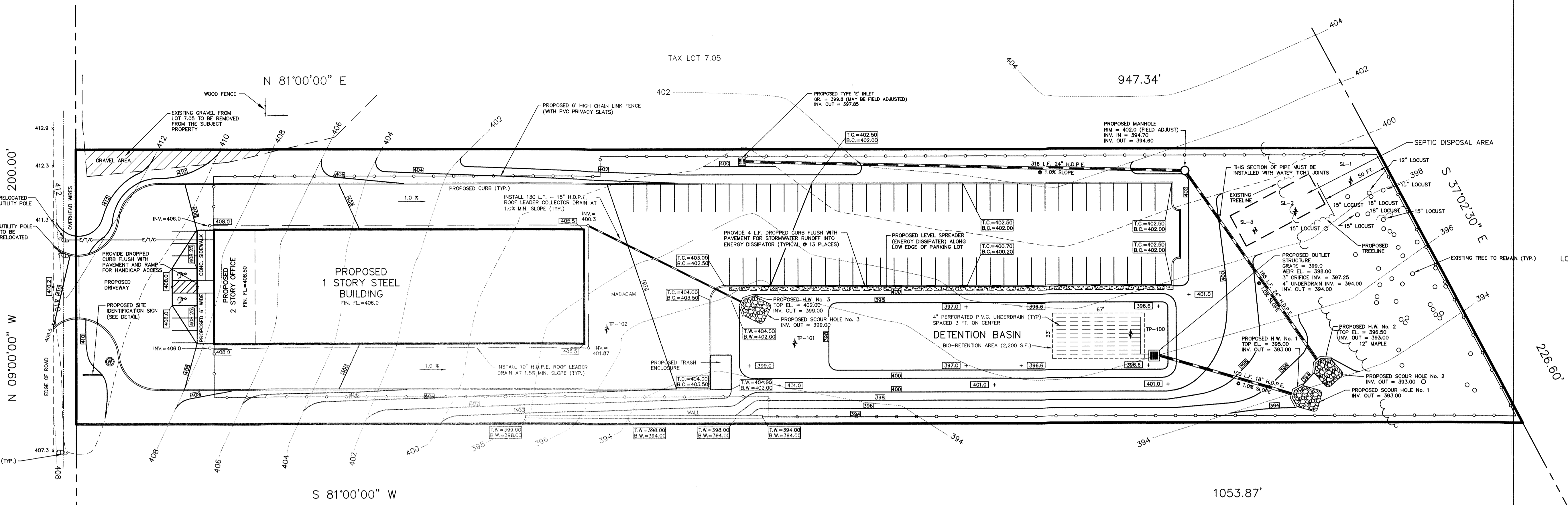
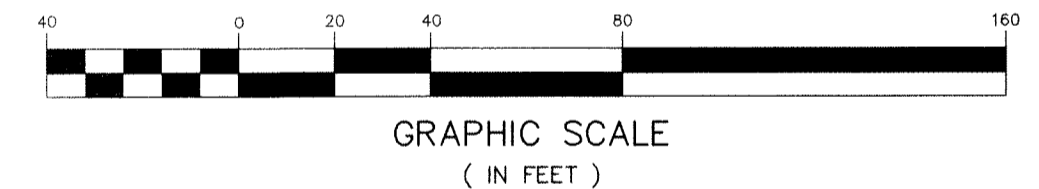


NEW JERSEY STATE HIGHWAY ROUTE 31
(80' R.O.W.)

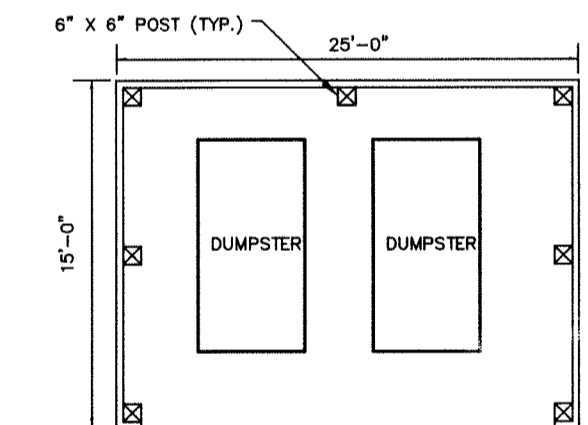


GRADING PLAN

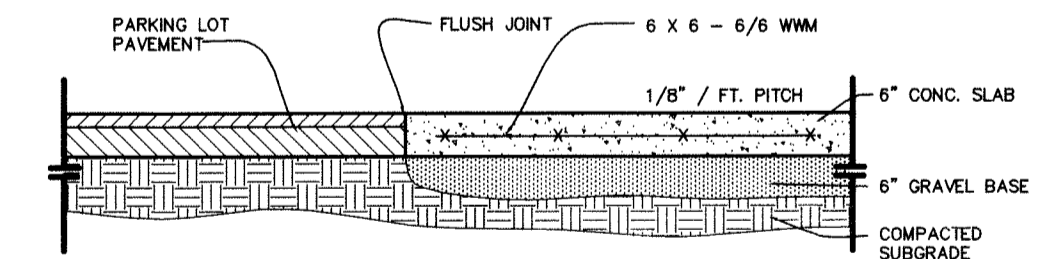
1 inch = 40 ft.



GRAPHIC SCALE
(IN FEET)

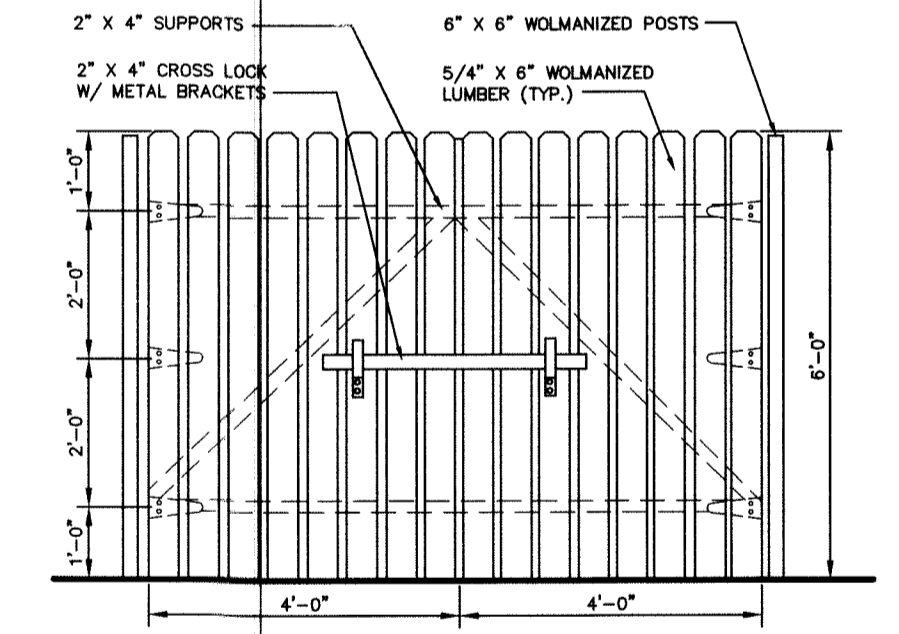


PLAN VIEW



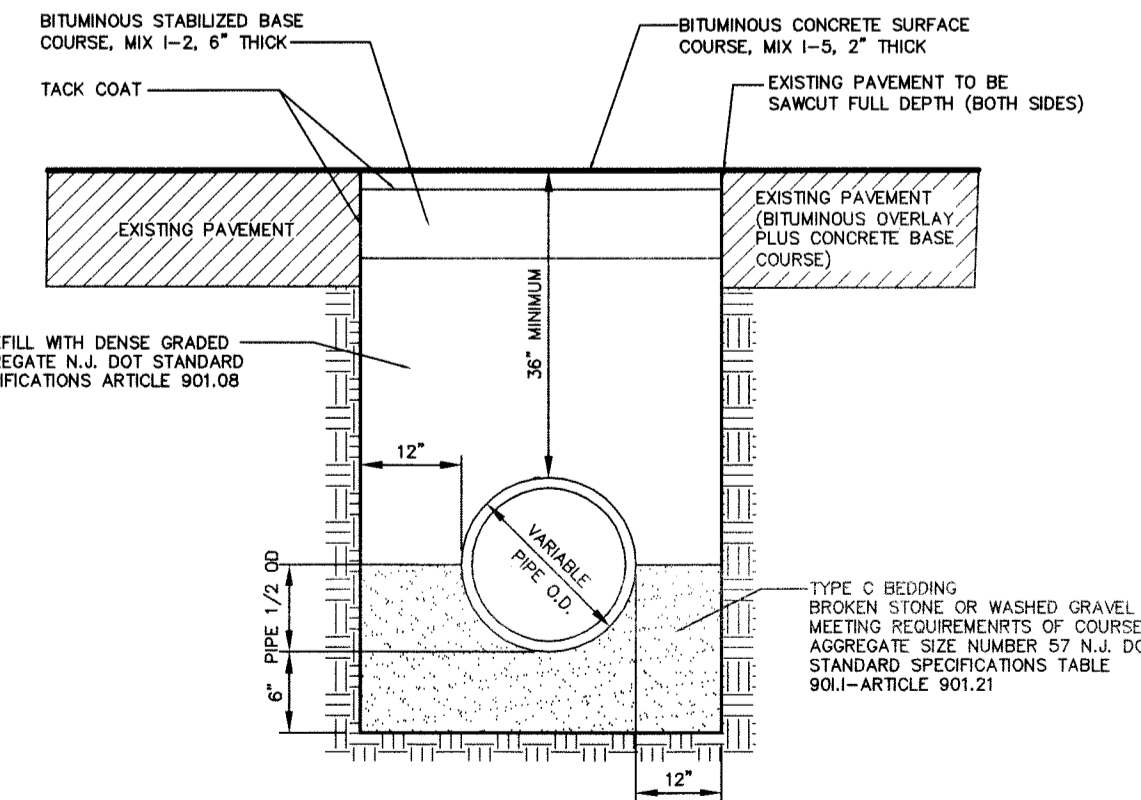
DUMPSTER ENCLOSURE SLAB

DUMPSTER ENCLOSURE DETAIL
NOT TO SCALE

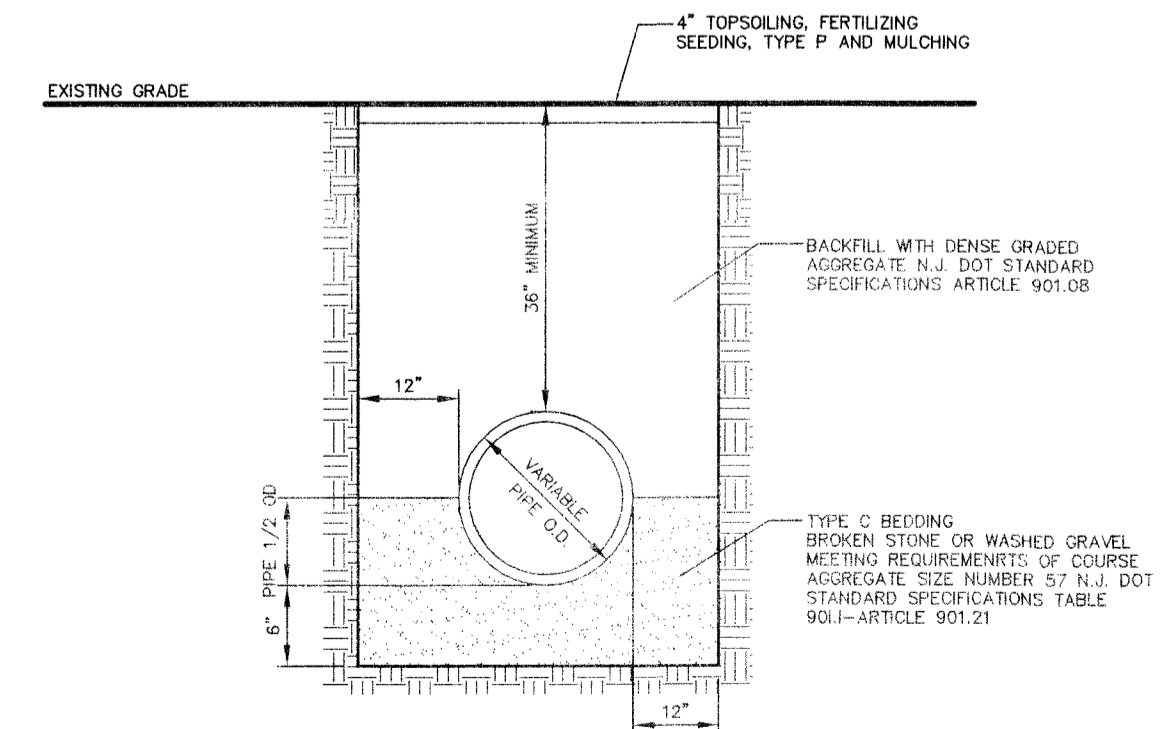


TRASH ENCLOSURE GATE DETAIL
NOT TO SCALE

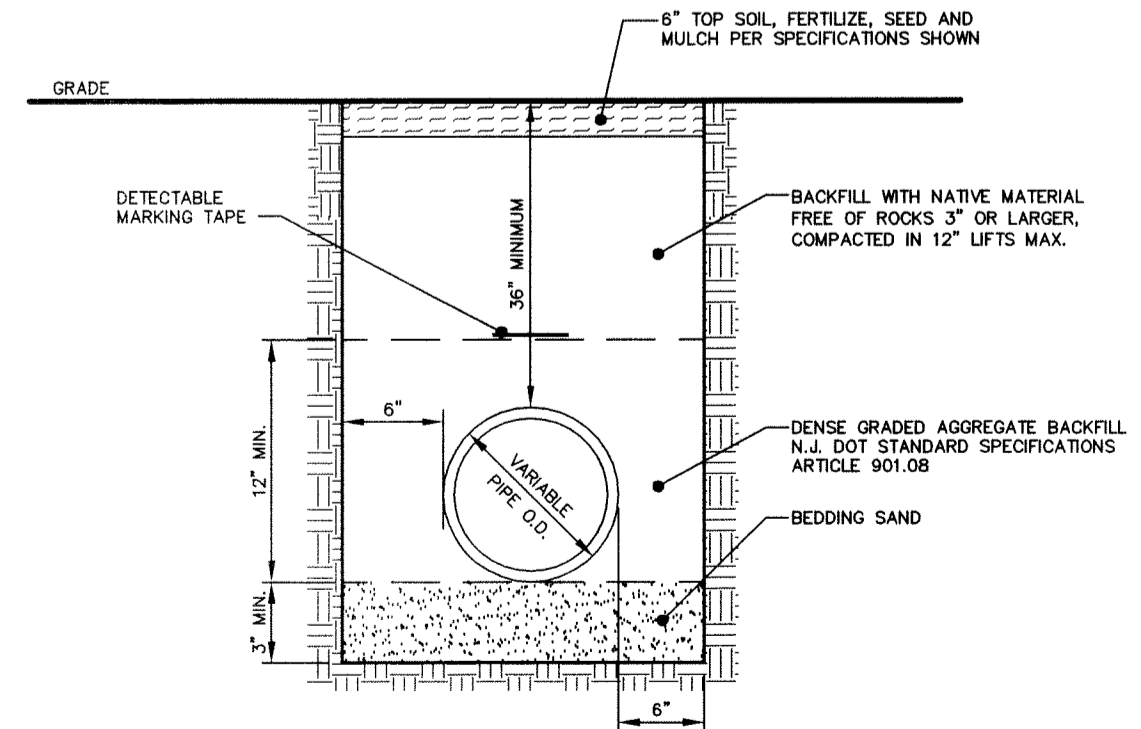
- NOTE:
- THREE REMAINING SIDES OF DUMPSTER ENCLOSURE TO BE 2" x 6" WOLMANIZED BOARD ON BOARD FENCE OR EQUIVALENT.
 - PAD TO BE 15' x 25' x 6" THICK 3500 PSI CONCRETE WITH 6" x 6" x 6/8 W.W.M. 6" x 6" POSTS TO BE SPACED 5' ON CENTER ALONG SIDES OF ENCLOSURE.
 - PROVIDE ROOM INSIDE ENCLOSURE FOR RECYCLABLE MATERIALS.



TRENCH AND BEDDING DETAIL (PAVED AREA)
NOT TO SCALE



TRENCH AND BEDDING DETAIL (UNPAVED AREA)
NOT TO SCALE



CONDUIT TRENCH AND BEDDING DETAIL
NOT TO SCALE

NO.	DATE	REVISION
2	01/15/21	PER BOARD
1	07/20/20	PER TOWNSHIP REVIEW

DANIEL E. PARKER
NEW JERSEY LAND SURVEYOR LIC. NO. 35866

PARKER
ENGINEERING & SURVEYING P.C.
370 EAST MAIN STREET, SOMERVILLE, N.J. 08876
PHONE: (908) 725-4400 - FAX: (908) 722-4401
E MAIL ADDRESS: PARKERES@AOL.COM

SITE PLAN
488 ROUTE 31 SOUTH
TAX MAP LOT 7.06 BLOCK 79
TOWNSHIP OF WASHINGTON
WARREN COUNTY, NEW JERSEY

STEPHEN E. PARKER
NEW JERSEY PROFESSIONAL ENGINEER LIC. NO. 36187

DRAWN BY PJD	CHECKED BY S.E.P.	SCALE 1"=40'	DATE 04-15-19	FILE 13211	SHEET 4 OF 9
-----------------	----------------------	-----------------	------------------	---------------	-----------------