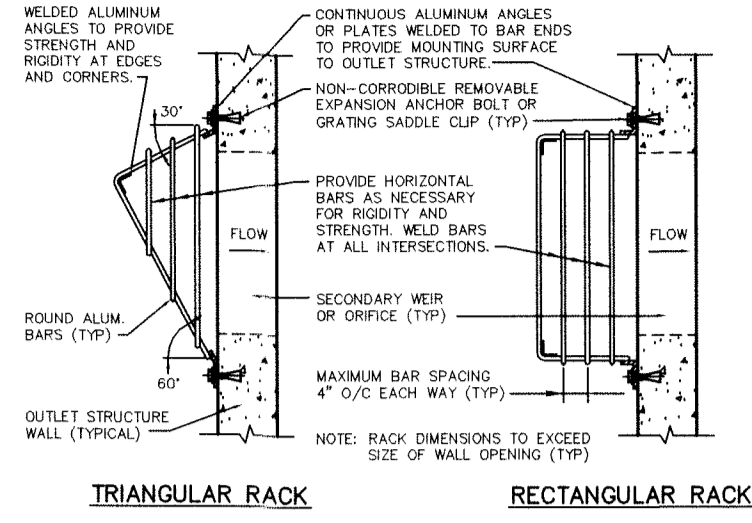
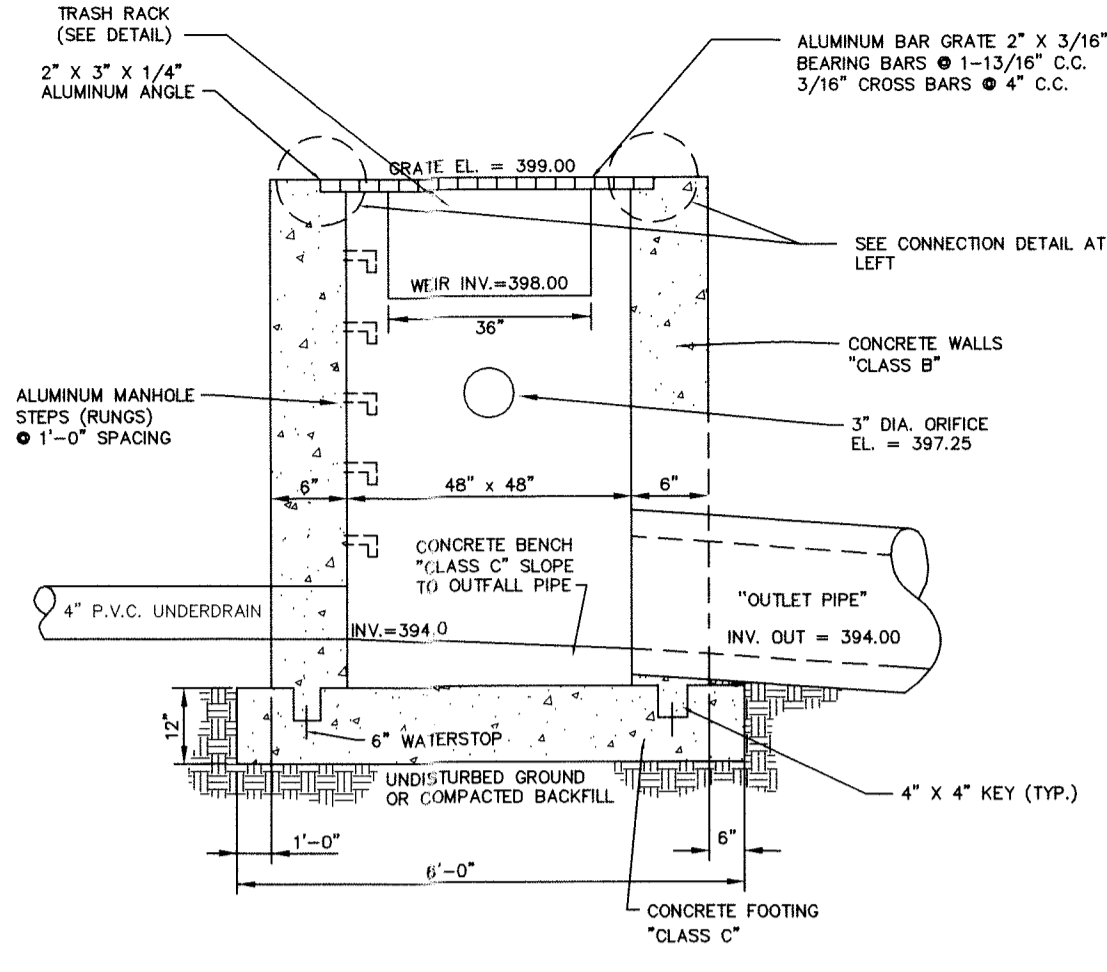


CONTROL STRUCTURE - TOP GRATE CONNECTION
NOT TO SCALE

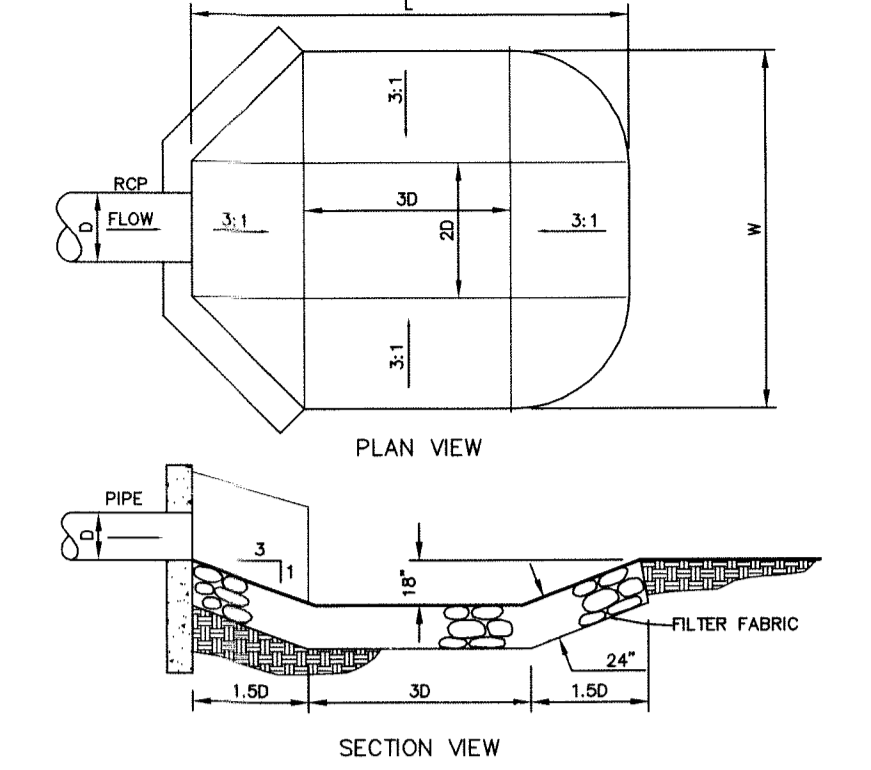


- NOTES:**
1. ALL TRASH RACKS MUST HAVE SUFFICIENT NET OPEN AREA PERPENDICULAR TO FLOW TO CONVEY PEAK DESIGN FLOW THROUGH THEM WITH MAXIMUM VELOCITY OF 2 F.P.S. IN MOST CASES, PEAK DESIGN FLOW SHOULD BE BASED ON PASSAGE OF EMERGENCY SPILLWAY HYDROGRAPH (ESH).
 2. ALL ALUMINUM SURFACES MOUNTED DIRECTLY TO CONCRETE MUST BE PAINTED WITH A HEAVY COAT OF ALUMINUM PIGMENTED ALKALINE RESISTANT BITUMINOUS PAINT EQUAL TO MILITARY SPECIFICATION MIL-P-48887.
 3. ALL TRASH RACKS AND FASTENERS SHALL HAVE SUFFICIENT STRENGTH TO WITHSTAND ANTICIPATED LOADINGS.
 4. SECONDARY WEIR OR ORIFICE TRASH RACKS SHOULD BE PROVIDED WHERE POTENTIAL EXISTS FOR DEBRIS TO BLOCK THE WEIR OR ORIFICE OR TO ENTER THE OUTLET STRUCTURE AND BLOCK THE OUTLET PIPE. RACKS SHOULD ALSO BE PROVIDED WHERE NECESSARY TO PREVENT ACCIDENTAL OR UNAUTHORIZED ENTRY, PARTICULARLY BY CHILDREN. ACTUAL SITE AND STRUCTURE CONDITIONS MUST BE CONSIDERED IN EVALUATION OF TRASH RACK NEEDS AND DESIGNS.

TRASH RACK DETAIL
NOT TO SCALE



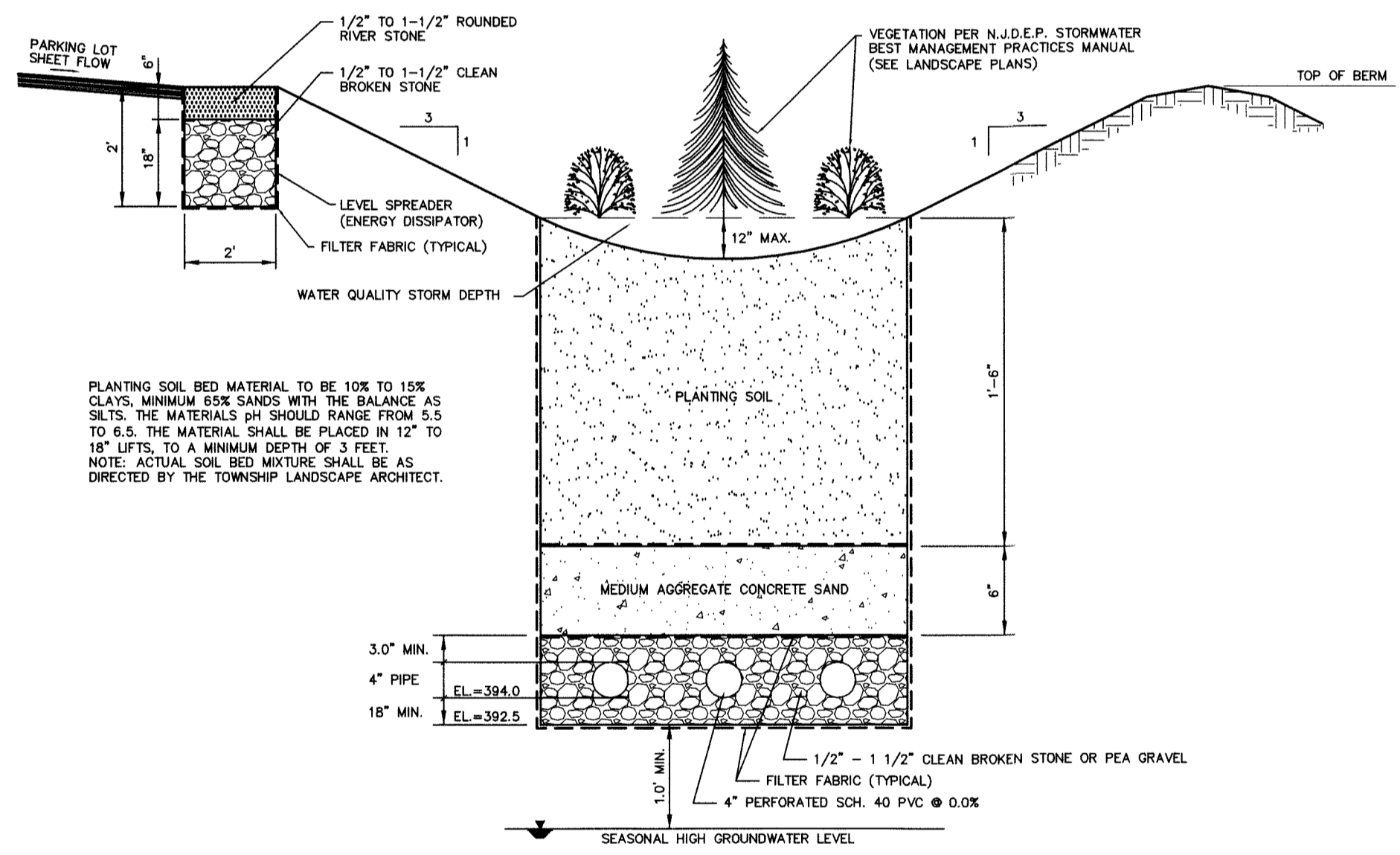
OUTLET STRUCTURE DETAIL
NOT TO SCALE



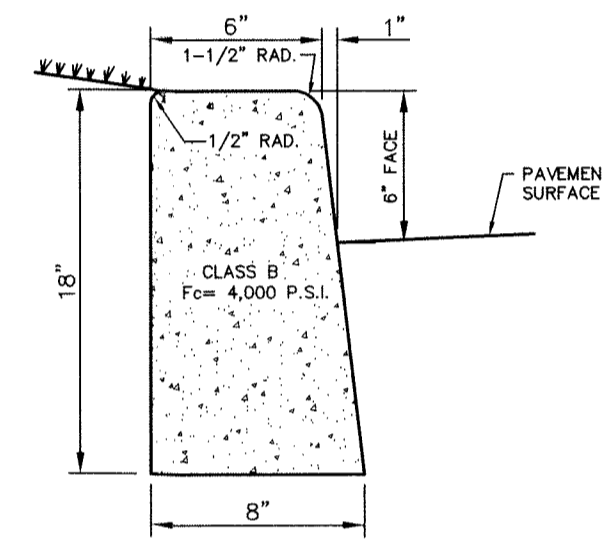
SCOUR HOLE SCHEDULE

| HEAD WALL NO. | D | S | Q(CFS) | L (FT.) | W (FT.) | D50 (IN) | T (IN) |
|---------------|-----|------|--------|---------|---------|----------|--------|
| 1 | 15" | 1.0 | 4.13 | 13.5 | 12.0 | 8 | 24 |
| 2 | 24" | 2.18 | 35.5 | 18.0 | 16.0 | 8 | 24 |

SCOUR HOLE PROTECTION DETAIL
NOT TO SCALE

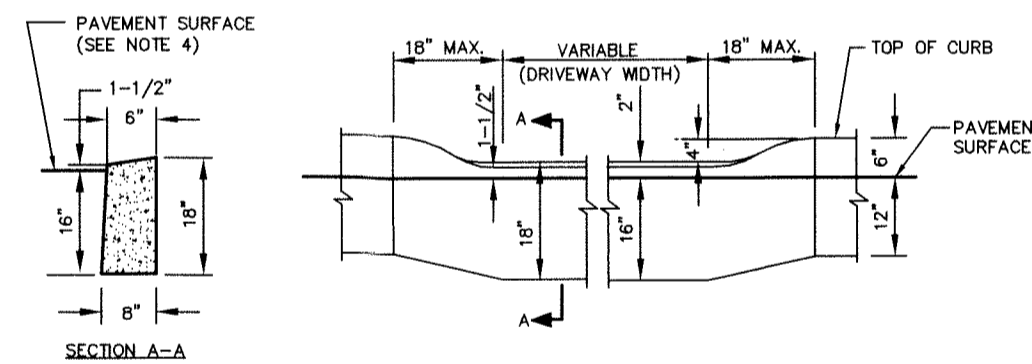


SECTION: BIORETENTION BASIN
NOT TO SCALE



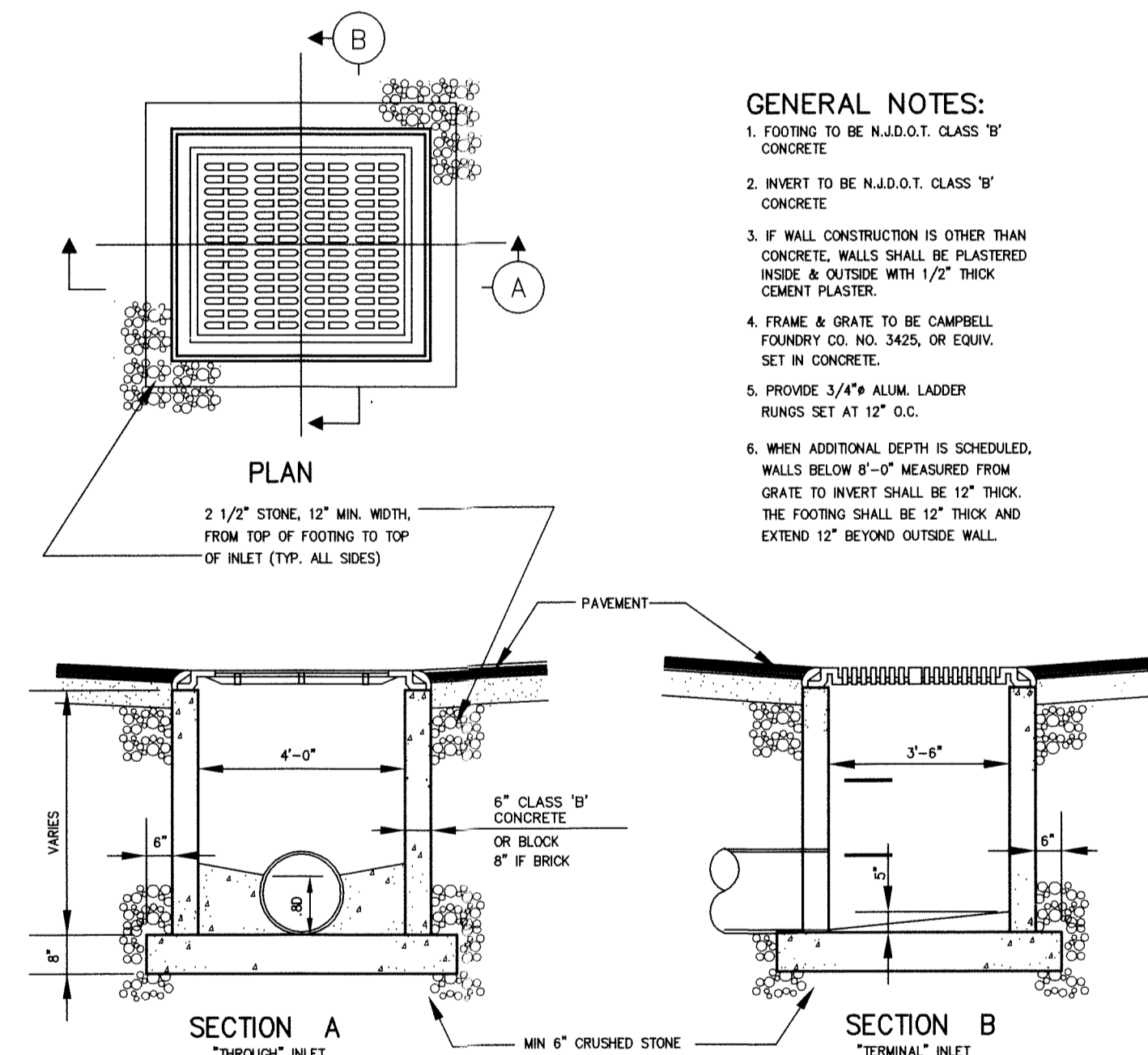
- NOTES:**
1. EXPANSION JOINTS SHALL BE PROVIDED AT APPROXIMATELY EQUAL DISTANCES OF NOT MORE THAN 20' BETWEEN JOINTS, AND SHALL BE FILLED WITH PREFORMED EXPANSION JOINT FILLER, 1/2" THICK, WHICH SHALL BE FLUSH WITH TOP AND FACE.
 2. CLEAN 3/16" JOINTS AT 10' O.C.
 3. CONCRETE SHALL BE 4,000 P.S.I. CLASS 'B' AIR ENTRAINED ACCORDING TO THE REQUIREMENTS OF THE NEW JERSEY D.O.E. STANDARD SPECIFICATIONS FOR ROAD AND BRIDGE CONSTRUCTION.

CONCRETE CURB DETAIL
NOT TO SCALE

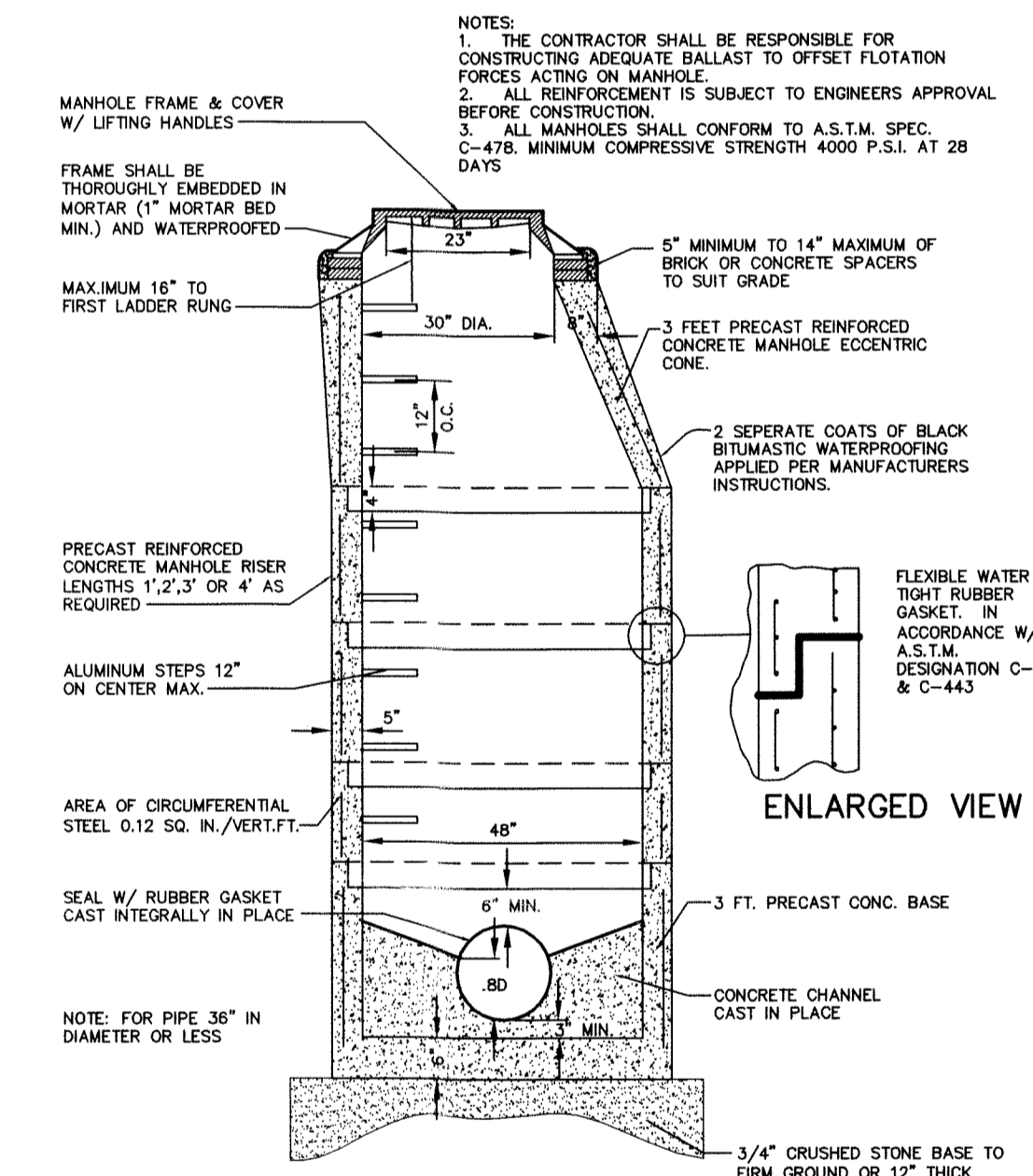


- NOTES:**
1. EXPANSION JOINTS SHALL BE PROVIDED AT APPROXIMATELY EQUAL DISTANCES OF NOT MORE THAN 20' BETWEEN JOINTS, AND SHALL BE FILLED WITH PREFORMED EXPANSION JOINT FILLER, 1/2" THICK, WHICH SHALL BE FLUSH WITH TOP AND FACE.
 2. CLEAN 3/16" JOINTS AT 10' O.C.
 3. CONCRETE SHALL BE 4,000 P.S.I. CLASS 'B' AIR ENTRAINED ACCORDING TO THE REQUIREMENTS OF THE NEW JERSEY D.O.E. STANDARD SPECIFICATIONS FOR ROAD AND BRIDGE CONSTRUCTION.
 4. PAVEMENT SURFACE TO BE FLUSH WITH CURB AT HANDICAP ACCESS AND LEVEL SPREADER LOCATIONS, TOP OF CURB AT HANDICAP ACCESS SHALL SLOPE TOWARDS THE PARKING AREA, TOP OF CURB AT LEVEL SPREADER SHALL SLOPE TOWARDS THE DETENTION BASIN.

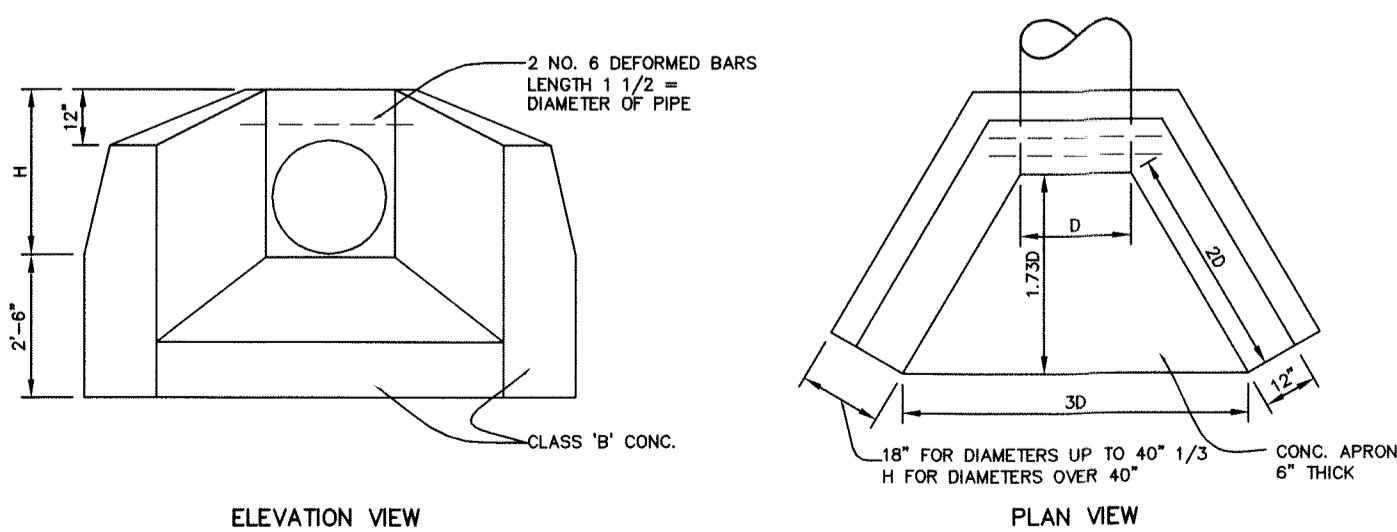
DEPRESSED CURB DETAIL
NOT TO SCALE



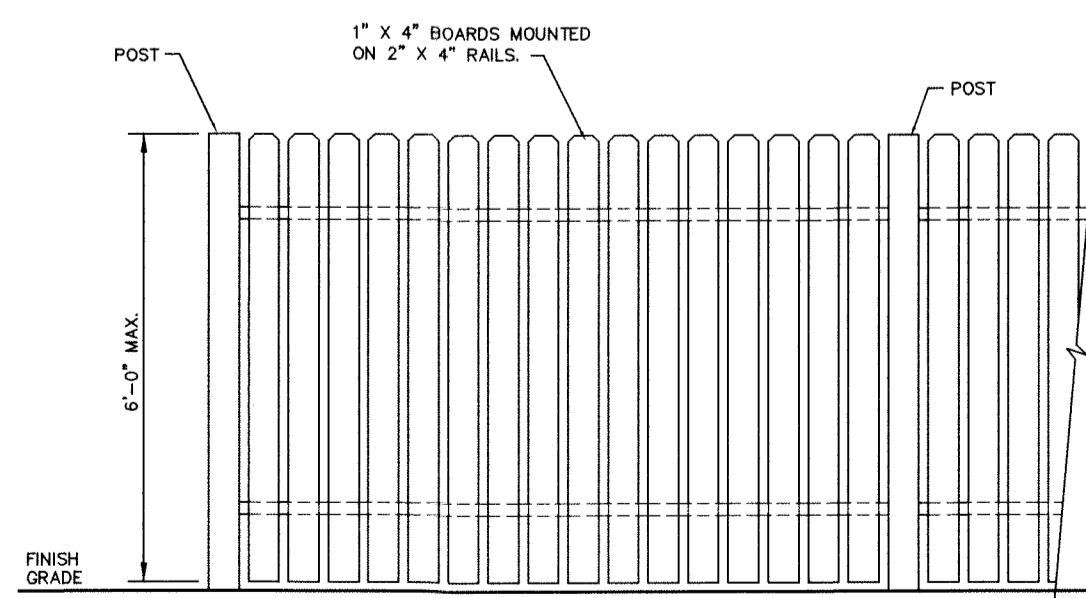
TYPE "E" INLET DETAIL
NOT TO SCALE



4\"/>



CONCRETE HEADWALL AND APRON DETAIL
NOT TO SCALE



BOARD FENCE DETAIL
NOT TO SCALE

NOTE: SHOP DRAWINGS FOR ALL PRECAST DRAINAGE STRUCTURES SHALL BE SUBMITTED TO AND APPROVED BY THE TOWNSHIP ENGINEER PRIOR TO FABRICATION.

| NO. | DATE | REVISION |
|-----|----------|---------------------|
| 3 | 02/10/21 | PER BOARD |
| 2 | 01/15/21 | PER BOARD |
| 1 | 07/20/20 | PER TOWNSHIP REVIEW |

DANIEL E. PARKER
NEW JERSEY LAND SURVEYOR LIC. NO. 35866

PARKER
ENGINEERING & SURVEYING P.C.
370 EAST MAIN STREET, SOMERVILLE, N.J. 08876
(908) 725-4400 FAX (908) 722-4401

| DRAWN BY | CHECKED BY | SCALE | DATE | FILE | SHEET |
|----------|------------|----------|----------|-------|--------|
| PJD | SEP | AS NOTED | 04-15-19 | 13211 | 8 OF 9 |

DETAIL SHEET

SITE PLAN
488 ROUTE 31 SOUTH
TAX MAP LOT 7.06 BLOCK 79
TOWNSHIP OF WASHINGTON
WARREN COUNTY, NEW JERSEY

STEPHEN E. PARKER
NEW JERSEY PROFESSIONAL ENGINEER LIC. NO. 36187