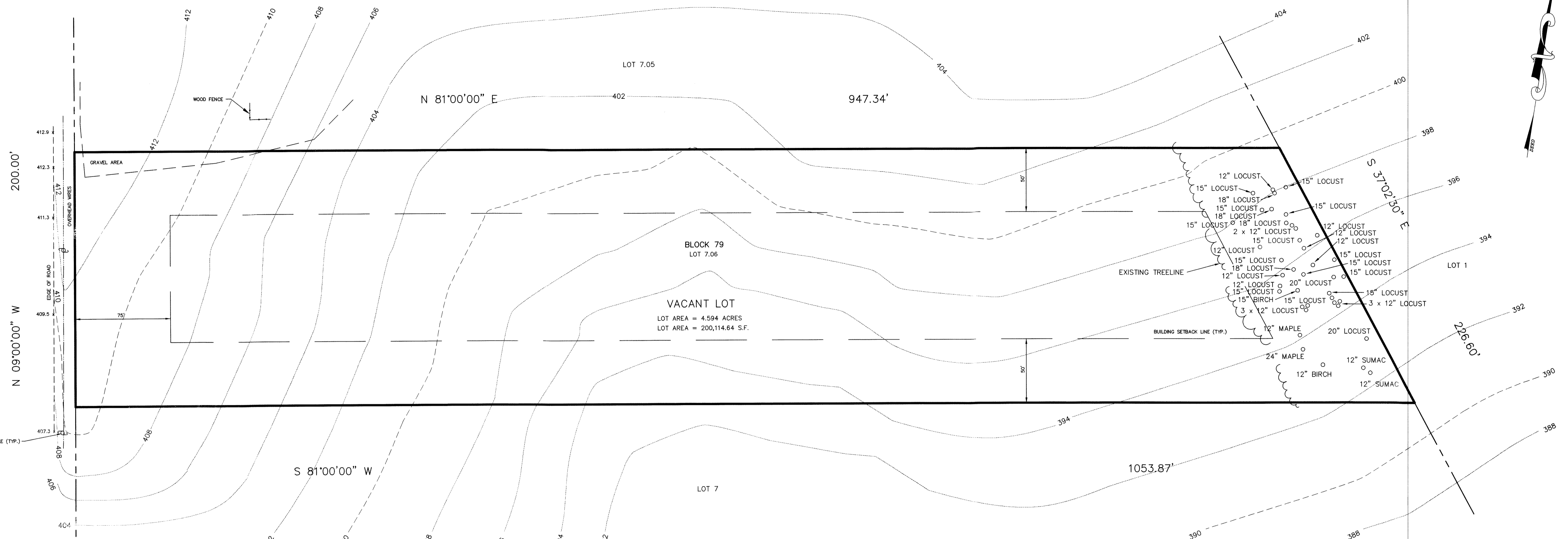
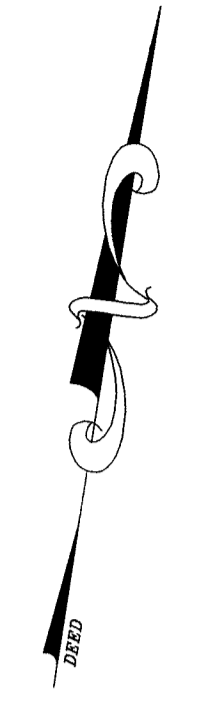
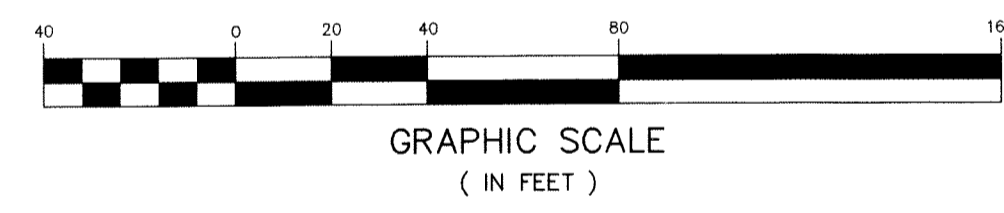
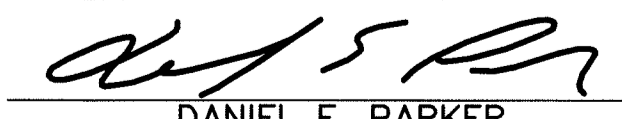


NEW JERSEY STATE HIGHWAY ROUTE 31
(60' R.O.W.)



EXISTING CONDITIONS
1 inch = 40 ft.




NO.	DATE	REVISION
1	07/20/20	PER TOWNSHIP REVIEW
 DANIEL E. PARKER NEW JERSEY LAND SURVEYOR LIC. NO. 35866		

PARKER
ENGINEERING & SURVEYING P.C.

370 EAST MAIN STREET, SOMERVILLE, N.J. 08876
PHONE: (908) 725-4400 - FAX: (908) 722-4401
E MAIL ADDRESS: PARKERES@AOL.COM

DRAWN BY: PJD
CHECKED BY: S.E.P.
SCALE: 1" = 40'

SITE PLAN
488 ROUTE 31 SOUTH
TAX MAP LOT 7.06 BLOCK 79
TOWNSHIP OF WASHINGTON
WARREN COUNTY, NEW JERSEY


STEPHEN E. PARKER
NEW JERSEY PROFESSIONAL ENGINEER LIC. NO. 36187

DATE	FILE	SHEET
04-15-19	13211	2 OF 9